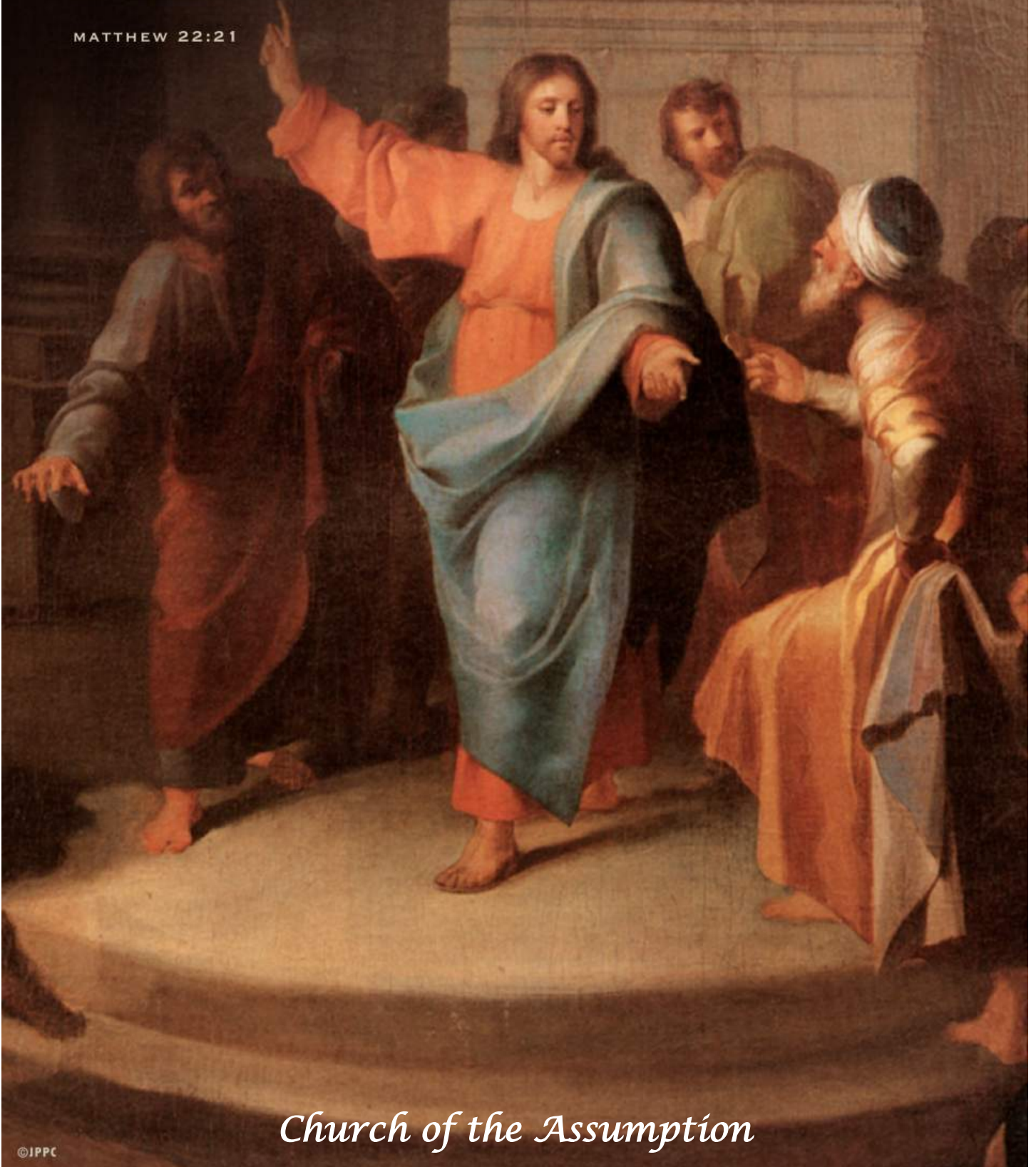


*October 22, 2023*

REPAY TO CAESAR  
WHAT BELONGS TO  
CAESAR AND TO GOD  
WHAT BELONGS TO GOD.

MATTHEW 22:21



*Church of the Assumption*

### Daily Mass:

Monday - Saturday: 7:30am

### Weekend Mass Schedule:

**Saturday Vigil:** 5:00pm

**Sunday:**

7:30am ~ 9:00am ~ 11:00am ~ 5:00pm

**Holy Days of Obligation:**

**Vigil Mass:** 5:30pm

**First Saturday Devotion to  
Our Lady of Peace & Good Voyage:** 4:00pm

**Adoration of the Blessed Sacrament:**

Monday and Wednesday  
8:00am - 5:00pm

**Sacrament of Reconciliation:**

Saturday 4:00pm - 4:45pm

### Lay Members of the Parish Corporation

Mr. Matthew Fair  
**Trustee**

Mr. Mark Rubino  
**Trustee**

Mrs. Michelle Hopson  
Chairman, **Parish Pastoral Council**  
Mr. Craig Wiele  
Chairman, **Parish Finance Council**

### Pray for the Sick

Abigail Lamb, Maryann Burriesci, Carl Viesti,  
Lisa Viesti, Pat Viesti, Candace Roy,  
Maggie Schoon

If you would like to add a loved one to be prayed for  
please contact the parish office at 203-227-5161.

### IN LOVING MEMORY

The candles at Our Lady of Peace and  
Good Voyage burns for  
**Elizabeth Conway**

The candles at Mary's Statue burns  
in loving memory of  
**Angie & Jerry Tuccinardi, Sr.**

The Sanctuary candle burns in loving  
memory of **Irene Murphy**

The Tabernacle candles burn in  
loving memory of **Angelo Rotella, Sr.**

The Altar candles burn in loving memory of  
**Carol Richardson**

# Mass Intentions

### Saturday, October 21

7:30am

5:00pm (Vigil)

Elizabeth & Frank Melia  
Dorothy Coppola

### Sunday, October 22

7:30am

9:00am

11:00am

5:00pm

### Twenty-Ninth Sunday In Ordinary Time

Elvio Casatelli  
The Mathew Family  
Tony Buono  
Family of Assumption,  
Oscar Mesa

### Monday, October 23

7:30am

**St. John Capistrano**  
Maureen Abel

### Tuesday, October 24

7:30am

**St. Anthony Mary Claret**  
Francis DiScala

### Wednesday, October 25

7:30am

Tracy Bruno

### Thursday, October 26

7:30am

Miliarmino E. Tan

### Friday, October 27

7:30am

Tony Buono

### Saturday, October 28

7:30am

5:00pm (Vigil)

Maria Grazia Guadagnuolo  
Fruing Trager

### Sunday, October 29

7:30am

9:00am

11:00am

5:00pm

### Thirtieth Sunday In Ordinary Time

Laura Michelle Drehsen  
Joseph Crosby  
Rose Burke  
Family of Assumption,  
Pablo Mesa

### Pray For Our Recently Deceased

Evelyn Marie Devine, Concepcion Valderrama,  
Denise Murtha, Angelo Rotella, Sr.,  
Gladys Hoeg, John Durkin

***May they rest in peace.***



# STEWARDSHIP



**Weekly Offertory: October 15, 2023**

Sunday Offertory:	\$ 5,019.00
Online Giving:	\$ 3,531.00
	<b>\$ 8,550.00</b>

Thank you to all the parishioners who contribute their weekly offering either at mass, by mail or through Online Giving. Your contributions help support the parish and all of the outreach ministries that are in need during these times. If you would like to donate through **Online Giving** please visit our website at [www.assumptionwestport.org](http://www.assumptionwestport.org). It's easy, safe and convenient. Thank you again for your ongoing support.

God Bless!  
Fr. Cyrus



*"Seek the Lord & His strength ... Seek His Presence continually"*

## **Bible Study with Fr. Joseph Yi ALL ARE WELCOME**

We meet **every Saturday morning following the 7:30am Mass** (approx. 8:10am) at Roncalli House. Come join us to discuss in detail the Sunday Gospel message and seek a greater understanding of the word of God and how to bring it into our daily lives. There will be refreshments. Bring your Bible ...we will have extra Bibles on hand.



## **NEW DAY BEREAVEMENT PROGRAM FALL SESSIONS** Wednesday afternoons 2:00 – 3:30 pm

**October 4 – December 6**  
(no session Nov. 22)

Your loss may be recent or long ago. We are here to help you on your journey to healing where you are invited to share your story, and to find comfort in a supportive, confidential environment. God will support you in your sorrow, and He will walk with you as you begin your journey through loss to healing.

Meetings take place in a small-group confidential setting, at Church of the Assumption, 98 Riverside Avenue, Westport and are led by trained bereavement facilitators. There is no charge.

Church of the Assumption is partnering with the Bereavement Initiative of the Fairfield County Catholic Cemeteries to offer this program. Please go to their website to submit a Program Inquiry Form or you can contact: Carolyn Killian at 203-404-0023

[Ctcemeteries.org/newday](http://Ctcemeteries.org/newday)

Once the form is submitted, you will hear from one of our bereavement ministers regarding the next steps.



Church of the Assumption

## ***Adoration***

Come join us on  
Mondays and  
Wednesdays anytime  
from 8:00am to 5:00pm



## **PRAY FOR OUR MEN AND WOMEN SERVING OUR COUNTRY**

*Please pray for all those who are bravely  
defending our nation and especially pray for  
those who have been wounded or have  
sacrificed their lives for the cause of peace.*

## Congratulations

Congratulations to **Vincent Penna**, who is the 2023 recipient of the **Saint Augustine Medal of Service**. We appreciate all you do!



## All Saints Day Mass Schedule

**Tuesday, October 31<sup>st</sup>**

Vigil 5:30pm

**Wednesday, November 1<sup>st</sup>**

7:30am, 12:15pm, 5:30pm

## All Souls Day Mass Schedule

**Thursday, November 2<sup>nd</sup>**

7:30am Mass

9:00am Mass at Assumption Cemetery,  
Greens Farms Road

12:15pm Mass

7:00pm Mass (with Choir & Violinist)

During the 7:00pm Mass those who have died throughout this past year will be especially remembered. Their names will be read, a candle lit and a rose placed at the altar in their memory. **All are welcome!**

*Refreshments will follow after the  
7:00pm Mass in McGrath Hall.*

## Church of the Assumption

## GIFTS OF PLENTY PROJECT



Starting October 7th until November 5th the Social Concerns Ministry will be collecting food gift cards for the "Gifts of Plenty" project.

For many years you gave generously for our brothers and sisters who are in need of food. We are asking you again to help our neighbors by purchasing a major food store gift card of any denomination.

Envelopes have been placed in the center aisle of the church and at the front and back entrances for you to put your donated food cards in them and return to the Collection Basket or in the mail slot at the Rectory Office. We will distribute to families/shelters before Thanksgiving so they may enjoy a happy holiday. Many thanks and may God bless you for your generosity.

***Sponsored by the  
Social Concerns Ministry***



## 20 Boxes Food Drive!



As Thanksgiving approaches, we want to give back to those in need by organizing a food drive through our Religious Education program. We will be organizing a service project to collect 20 boxes of food for 20 families in need.

We encourage you to take your child shopping so they can be part of his meaningful endeavor. Whether you can contribute one box of food or more, your contribution will make a difference. Let us work together to reach our goal of collecting 20 boxes of food.

Donations can be dropped off **by Sunday, November 5th**, at the Religious Education office or when your child comes to class. We kindly request that all donated items be non-perishable.

Thank you in advance for your generosity and support. Together, we can make a significant impact on the lives of those in need.

**Canned Tuna  
Canned chicken**

**Stuffing**

**Soups**

**Rice**

**Beans**

**Powder Milk**

**Cereals**

**Instant Mashed Potatoes**

**Canned Fruits  
Canned Vegetables**

**Pasta**

**Pasta sauce**

**Peanut butter**

**Jelly**

**Macaroni & cheese**

**Juice**

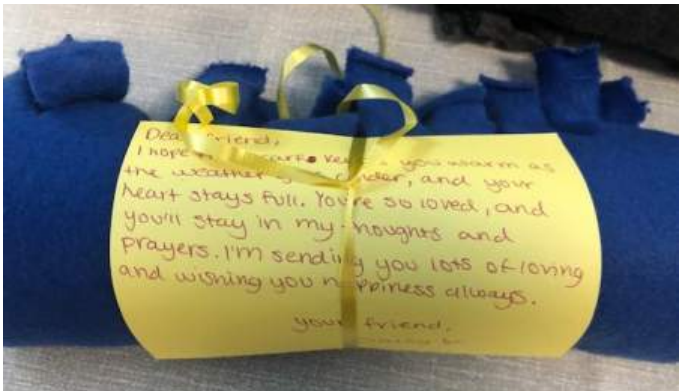
Bring in or sign up on sign up genius below

[https://www.signupgenius.com/  
go/8050B49ACA72FA1F58-45093560-  
20boxes](https://www.signupgenius.com/go/8050B49ACA72FA1F58-45093560-20boxes)

## Assumption Youth Group

Our Assumption Youth spent an afternoon making scarves that will be included in our annual Backpack Outreach program to benefit those in need. The packs, filled with food, toiletries and cold weather gear will be given to Blessed Sacrament in Bridgeport. We can use your help! We are trying to fill 100 backpacks and are still in need of new or gently used backpacks for the project. If you have any you can spare, please leave them on the Roncalli front porch! Thank you!

If you would like your 6th-12th grader involved for faith building and service, please contact Youth Minister, Michele Harding at [mharding@assumptionwestport.org](mailto:mharding@assumptionwestport.org).



## Altar Server Installation

Last Sunday, at the 11:00am Mass, Fr. Raja and Deacon Jim celebrated the installation of Preston DeRosa as an Altar Server. Congratulations Preston!



## We Welcome Our Newly Baptized:

*Avery Sienna Gerst*

*Natasha Elfriede Waupotitsch*



## Join the KOC newsletter & come to the meetings!

The Westport Knights invites everyone to subscribe to our community newsletter! Stay up to date with all our events! Scan the QR Code. Come to the meetings on the first Tuesday of every month at 7:00pm in McGrath Hall.



## Join Us At Our Family Mass

Every Sunday at 9:00am

Followed by Coffee and Donuts!



The Sunday 9:00am mass will be our Family Mass. Each week a different family is asked to bring up the gifts at the Offertory. After Mass everyone is invited to the McGrath Hall for refreshments and a chance to meet other families. All are encouraged to participate in some way during the Family Mass.

We are also inviting children who would like to read the Second Reading to please contact Cathy Romano at the Rel. Ed. office at 203-226-5448 or [cromano@assumptionwestport.org](mailto:cromano@assumptionwestport.org). Training will be provided.



## Mary's Mantle Prayer Shawls

*"Our Labor of Love"*

Join us **Sundays at 4:00pm** at Roncalli House. No experience needed, we will teach you to knit or crochet. Bring your favorite yarn, we will provide the needles. Give someone warmth and joy through your own creation. For more information, please contact: Juany Fumai, [jfumai@hotmail.com](mailto:jfumai@hotmail.com).



## ASSUMPTION BOOK GROUP



We extended a warm welcome to anyone interested in deepening her/his faith while reading and sharing ideas about **LIVING BUDDHA, LIVING CHRIST**, written by Thich Nhat Hanh. As the Dalai Lama states: (the author) shows us the connection between personal inner peace and

peace on earth. We meet for nine weeks beginning Tuesday, 19 September on ZOOM from 5 - 6:30 PM. Interested? email: [helenctman@gmail.com](mailto:helenctman@gmail.com) or phone: 203-227-6318.

## Advertiser of the Month



Providing Legal Services for Estate Planning • Real Estate • Small Business

[www.jwglp.com](http://www.jwglp.com) 203-292-6724  
1853 Post Road East, Westport

If you would like to learn more about advertising call our Bulletin Representative: **Judy McNee**.  
[jmcnee@jppc.net](mailto:jmcnee@jppc.net) (203)856-9085



## Church of the Assumption Pope Francis Food Closet

Thank you for the continued support to the Parish Food Closet. Your donations are helping so many families during these difficult times. If you would like to donate, the following items are in need:

- CRACKERS
- PEANUT BUTTER
- SNACKS, COOKIES
- CEREAL
- CEREAL BARS
- CAKE MIX, FROSTING, BROWNIES
- ONE POUND BAGS OF SUGAR
- ONE POUND BAGS OF RICE
- PASTA, PASTA SAUCE
- CANNED SOUPS
- COFFEE



The back door of the church off the parking lot is open from 7:30am - 5:00pm, Monday - Friday (or before weekend masses) for your donations or you may have your items shipped directly to the Parish Office: 98 Riverside Avenue, Westport, CT 06880.

## CLERGY

Rev. Fr. Cyrus M. Bartolome  
Pastor and Episcopal Vicar for Filipino Catholics  
[frcyrus@assumptionwestport.org](mailto:frcyrus@assumptionwestport.org)  
Rev. Fr. Joseph Yi, SDB, Parochial Vicar  
[fryi@assumptionwestport.org](mailto:fryi@assumptionwestport.org)  
Deacon James Meehan, Parish Deacon  
[dnmeehan@assumptionwestport.org](mailto:dnmeehan@assumptionwestport.org)

## SACRED MUSIC MINISTRY

203-227-5161 ext. 105  
Frank Matto, Director and Organist  
[fmatto@assumptionwestport.org](mailto:fmatto@assumptionwestport.org)  
Aidan Andrews, Cantor

## YOUTH MINISTRY 203-222-8486

Michele Harding, Youth Minister  
[mharding@assumptionwestport.org](mailto:mharding@assumptionwestport.org)

## PARISH STAFF 203-227-5161

Office Hours: Monday - Friday 8:30am-4:30pm  
(closed 12:00pm - 1:00pm)

Michelle Hankey, Business Manager  
[mhankey@assumptionwestport.org](mailto:mhankey@assumptionwestport.org)  
Nancy Curcio, Assistant Business Manager  
[ncurcio@assumptionwestport.org](mailto:ncurcio@assumptionwestport.org)  
John Osterndorf, Bulletin & Website Editor  
[josterndorf@assumptionwestport.org](mailto:josterndorf@assumptionwestport.org)  
Marie Vandall, Administrative Assistant  
[mvandall@assumptionwestport.org](mailto:mvandall@assumptionwestport.org)

## RELIGIOUS EDUCATION 203-226-5448

Monday - Wednesday: 9:00am - 4:00pm  
Catherine Romano, Director  
[cromano@assumptionwestport.org](mailto:cromano@assumptionwestport.org)

# Harding

FUNERAL HOME

Funeral Services  
Embalming • Burial • Cremation  
Visitation • Memorial Services  
Pre-Arrangements • Helpful Guidance  
Funeral Trusts

## A Complete Funeral & Cremation Service

Family Owned & Operated Since 1977

Neil F. Harding • John J. Harding

210 Post Rd. E., Westport  
(Corner Imperial Ave.)

**203-227-3458**

Visit us at [www.HardingFuneral.com](http://www.HardingFuneral.com)



### MAGTYPE COMPUTER RESOURCES

Computer Support PC and Mac  
Home and Office  
Onsite and Remote

203-377-7908 [www.magtype.com](http://www.magtype.com)

PANE EBENE

203-292-9584

1620 Post Road East  
Westport, CT

[www.paneebene.com](http://www.paneebene.com)

## DEVINE BROS. Inc.

SINCE 1918

Propane • Bioheat & Home Heating Oil  
24 Hr. Heating & Cooling Service

**203-866-4421**

[www.devinebioheat.com](http://www.devinebioheat.com) • [www.devinebrosinc.com](http://www.devinebrosinc.com)



### Elaine Schanzenbach

Caring. Experience. Integrity. Hardwork

20+ Years as a Trusted Realtor

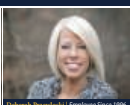
**203.984.5543**

[Elaine.Schanzenbach@raveis.com](mailto:Elaine.Schanzenbach@raveis.com)

[www.ElaineSchanzenbach.raveis.com](http://www.ElaineSchanzenbach.raveis.com)

47 Riverside Avenue • Westport • CT • 06880

Proud to Support ASSUMPTION CHURCH



Contact Debbie today  
for any of your banking needs!

O 203.319.7843

E [Debbie.Przewlocki@FairfieldCountyBank.com](mailto:Debbie.Przewlocki@FairfieldCountyBank.com)

20 Compo Road South • Westport, CT

Member FDIC



Fairfield County Bank  
Caring for the Community Since 1877

[www.FairfieldCountyBank.com](http://www.FairfieldCountyBank.com)

### ROBERT E. GRANT

Attorney At Law

Eight Myrtle Ave., Westport, CT

203-227-6769

Real Estate • Estate Planning • Probate

### Junk Removal - Clean Outs - Dump Runs



### Fairfield County Junk Pros

KYLE HINES (203) 984-9628

[www.FCjunkpros.com](http://www.FCjunkpros.com)

### Bert's Tree Service

Tree Removal, Pruning, and Stump Grinding  
Complete Tree Service Company  
Certified Arborist

Located in Westport, Serving Westport  
and Surrounding Areas

Call Bert Porzio 203-227-0590

### A • S FINE FOODS

Foods • Delicatessen  
Prepared Food • Catering  
361 POST ROAD WEST  
WESTPORT, CT 06880  
(203) 293-4042

### AMERICAN FRAMELESS SHOWER DOOR

Specializing in Frameless Shower Doors

(800) 606-1776 Toll Free

(203) 227-1785 • [info@americanframeless.com](mailto:info@americanframeless.com)

[www.americanframeless.com](http://www.americanframeless.com)



Helping you make important health  
and wellness decisions.

Visit us at one of our convenient testing locations.

#### WILTON

Our Lady of Fatima  
229 Danbury Road  
Wilton, CT 06897

#### SHELTON

Patient Service Center  
2 Trap Falls Rd, Suite 105  
Shelton, CT 06484

Learn more at [progressive-diagnostics.com](http://progressive-diagnostics.com)

### D. NAZZARO

TILE • MARBLE • STONE INSTALLATION

Let's Talk Tile!

203-209-7304

FREE ESTIMATES - FULLY INSURED

Proudly Serving All Of Fairfield County Since 1982

[WWW.DONNAZZAROTILE.COM](http://WWW.DONNAZZAROTILE.COM)



### TRACY CHEVRIER - Lifestyle Realtor

HIGGINS GROUP PRIVATE BROKERAGE

Bedford Square | 30 Elm St. Westport, CT. 06880

C: 503.330.3550 | O: 203.227.4065 | E: [tracy@marjennings.com](mailto:tracy@marjennings.com)

Tracy Chevrier | [MarJennings.com](http://MarJennings.com)

[tracychevrierMAR](http://tracychevrierMAR)



AUTHENTICALLY CATHOLIC,  
DISTINCTLY CLASSICAL  
K-8 EDUCATION  
[www.reginapacisacademy.org](http://www.reginapacisacademy.org)  
203-884-0926

Celebrating our 30<sup>th</sup> Anniversary

A BIG THANK YOU to the Westport Community!

243 Post Rd. W.  
203-454-4444

[www.viasforza.com](http://www.viasforza.com)

VIA SFORZA Trattoria  
EST. 1992



### PUMPKIN PRESCHOOL OF WESTPORT

Locations also in Fairfield & Shelton

[www.pumpkinpreschool.com](http://www.pumpkinpreschool.com) 203.226.1277



### The best care is Always given to your loved one...

Services Provided: Companionship, Personal Care, Transferring/Positioning, Medication Reminders, Housekeeping/Laundry, Meal Preparation: Special Diet/Nutritional Care, Transportation, Respite Care/Hospice, Alzheimer's/Dementia Care/Parkinson's

Proudly Serving: Fairfield and New Haven Counties

Non-medical homecare -- Providing Hourly/Live-in/24 Hour Care

"Our goal is to ensure that our clients are safe, happy and  
that we Always provide the best possible care."

Rated 5 Star Care by our Clients • Call for your COMPLIMENTARY Home Assessment

29 East Main Street, Westport, CT 06880

[www.alwayscaringct.com](http://www.alwayscaringct.com)

203.557.4355



### Mallory's Army Foundation

United Together In The Fight Against Bullying...

Don't Just Teach Kindness... BE KINDNESS!

[www.MallorysArmy.com](http://www.MallorysArmy.com)

(973) 440-8657 • [info@mallorysarmy.org](mailto:info@mallorysarmy.org)

It's easy to join our mailing list! Just send your email address by text message:

Text MALLORYSARMY to 22828 to get started. Message and data rates may apply.



FULLY

LICENSED

INSURED

(203)

**610-5489**



Tony Palmer

DESIGN

BUILD

MAINTAIN

O: 203-227-8264

C: 203-395-2126

[www.Palmerlandscapes.com](http://www.Palmerlandscapes.com)

### catholicmatch® Connecticut



[CatholicMatch.com/dateCT](http://CatholicMatch.com/dateCT)

### JWG

Jones Washburn-Gonzalez, LLP

PROVIDING LEGAL SERVICES FOR  
ESTATE PLANNING • REAL ESTATE  
PROBATE • SMALL BUSINESSES

Sharon Jones - Jessica Washburn-Gonzalez

1853 POST ROAD EAST • WESTPORT | (203) 292-6724 | [WWW.JWGLLP.COM](http://WWW.JWGLLP.COM)



Privately Owned Exceptional  
Senior Living at its Finest

~ Assisted Living

~ Memory Care

~ Short-Term Rehabilitation ~ Long-Term Skilled Nursing

Call Us Today at 203-761-1191

[www.thegreensatcannondale.com](http://www.thegreensatcannondale.com)



### HARMONY DESIGN

BUILD CONTRACTORS

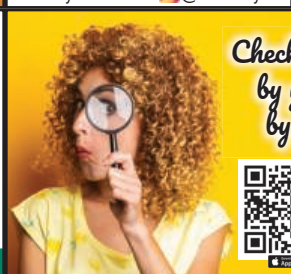
Home Remodeling and

Additions Services

203-667-2343

[harmonydbc.com](http://harmonydbc.com)

[@harmonydbc](https://www.instagram.com/harmonydbc)



Check out the latest offerings  
by your bulletin sponsors  
by downloading our app

